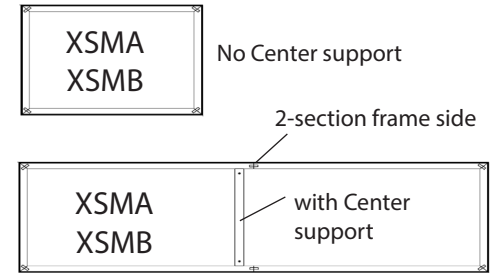


Charisma Frame™ - XSM Tool Free Series

XSMA - Single sided frame
XSMB - Double sided frame

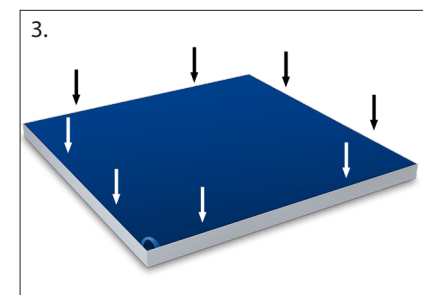
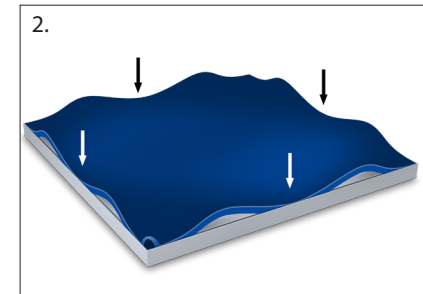
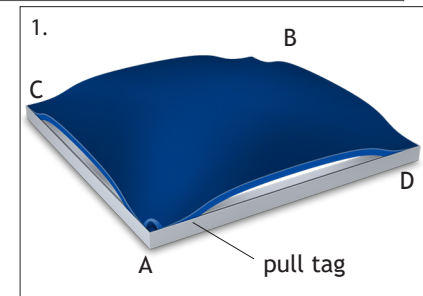
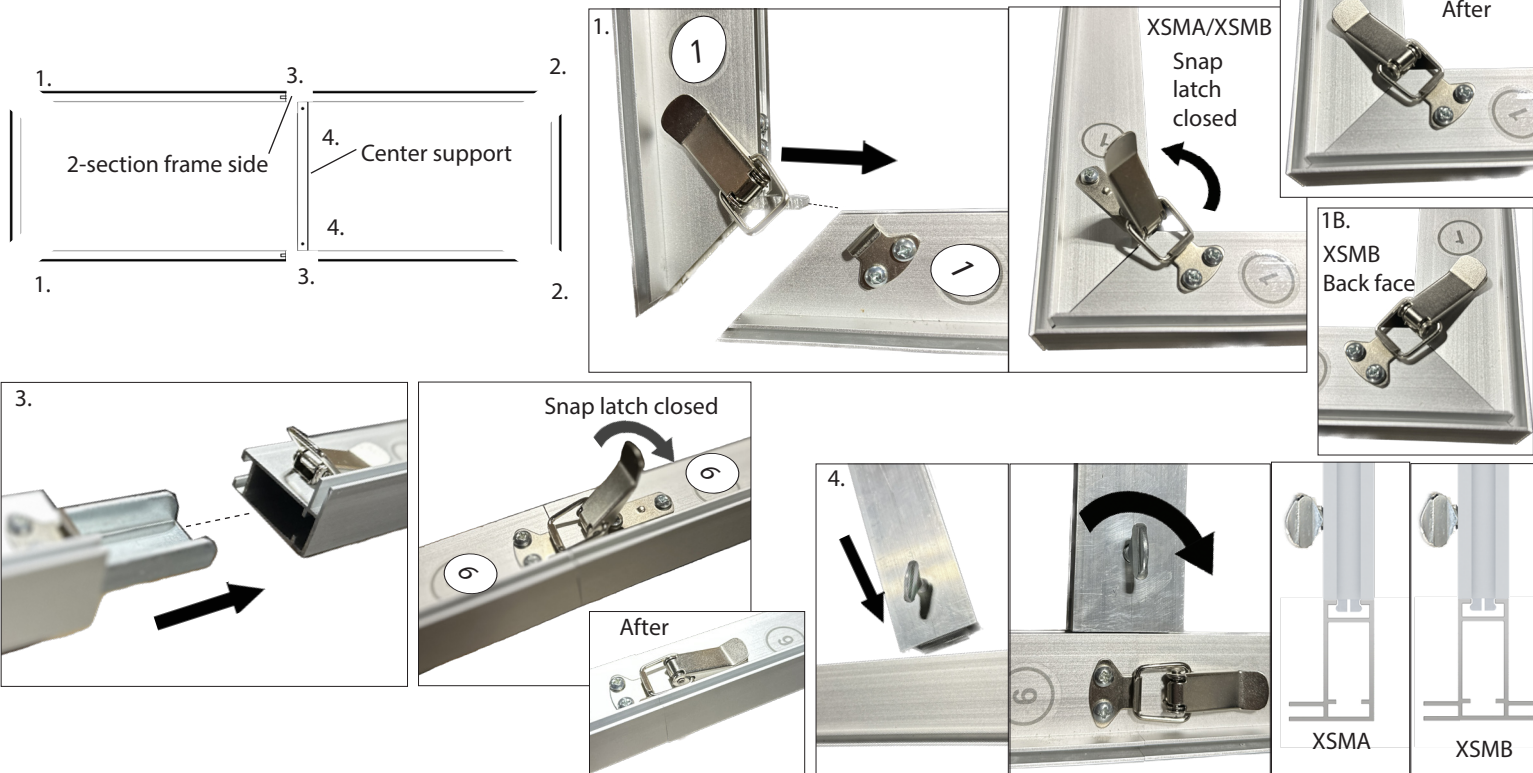
All frame extrusion ends are marked with a number sticker, connect 1 to 1, 2 to 2, 3 to 3, etc

1. Find the bottom half section of the frame. The bottom section will be the same length as the top section. Connect the side sections to the bottom section, by inserting the underside tab fully into the adjacent section. Hook the swiveling bar of the latch onto the hook of the adjacent frame side, then push the latch down until you hear or feel it snap closed.
1B: For XSMB repeat this step for the back face.
2. If your frame side is split 2-sections, repeat step 1 for the other half of the frame.
3. Join the two frame halves together using the latch connection as shown below. For XSMB repeat this step for back face.
4. If provided, place center support bar bracket into frame channel and use the thumb screw to expand the bracket inside the channel to secure it in place.



Graphic Installation

1. To install the graphic, take Corner A with the pull tag on it and press about 6"-10" of silicone into the frame channel. Repeat for the opposite Corner B. Repeat for Corner C. Lastly, repeat for the final corner.
2. After all corners are pressed in, press the silicone into the frame channel at the mid-points on all four sides. This prevents the graphic from bunching up or stretching too much and will ensure a smooth and tight fit.
3. Press silicone into frame evenly between the corners and midpoints.
4. To remove the graphic from the frame, simply pull up on the pull tag.



Charisma Frame™ - XSM Series Mounting Options

Wall Mount

Wall Mount Brackets

1. Mount top brackets onto wall. Use optional molly anchors if mounting to drywall.
2. Slide frame onto top brackets.
3. Mount bottom brackets to wall to secure frame. Use optional molly anchors if mounting to drywall.

Distortion Brackets - For leveling frame and eliminating sagging.

4. Mount top brackets onto wall. Use optional molly anchors if mounting to drywall.
5. Slide frame onto top brackets tighten adjustable screw so that it rests inside the frame channel.
6. Mount bottom brackets to wall to secure frame. Use optional molly anchors if mounting to drywall. Tighten adjustable screw so that it rests inside the frame channel.

Ceiling Mount

XSMA (Single-Sided Frame) and XSMB (Double-Sided Frame)

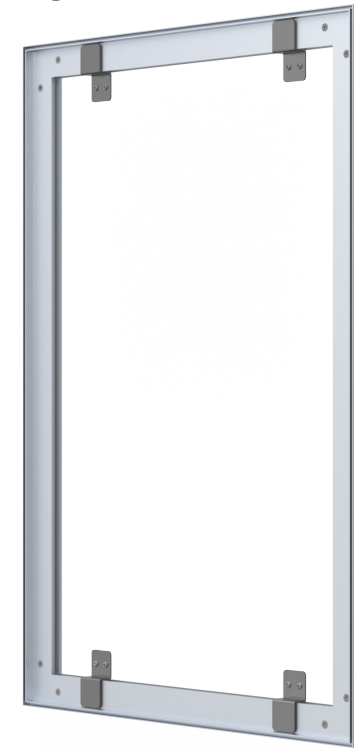
7. Connect hanging wires to eyebolts on frame.

Base Mount

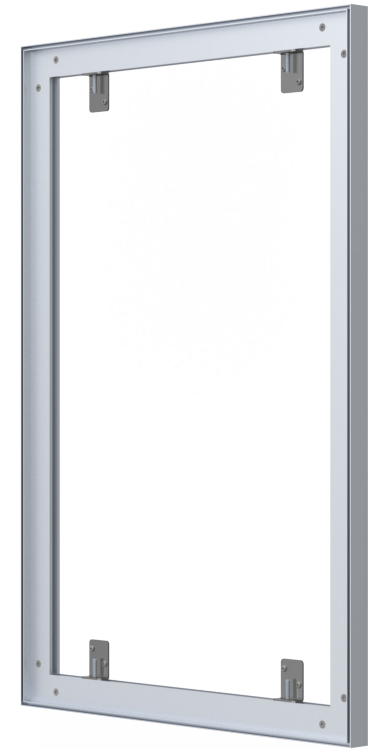
XSMA (Single-Sided Frame) and XSMB (Double-Sided Frame)

8. Determine base style. Attached the base to the frame using the Phillips screws provided.

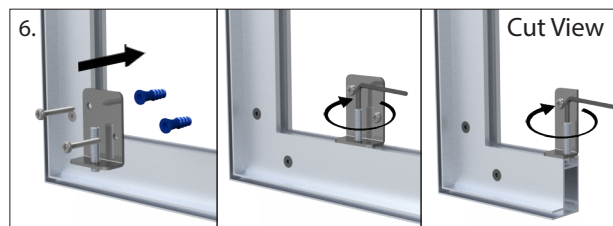
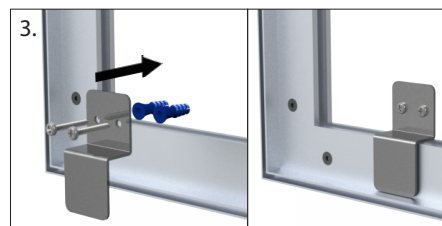
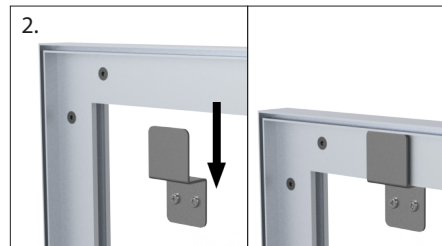
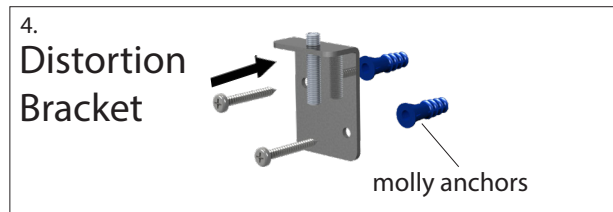
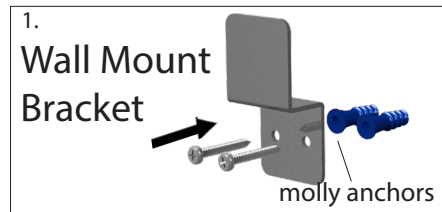
NOTE: Size of frame may differ, instructions remain the same.



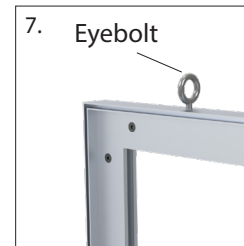
XSMA w/Standard Brackets



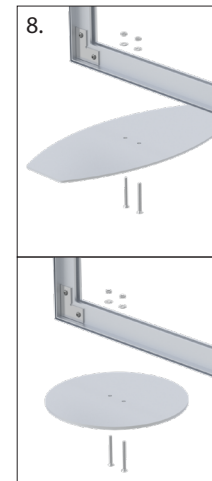
XSMA w/Distortion Brackets



Ceiling Mount



Base Mount



XSMA/XSMB with Base Plates